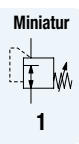
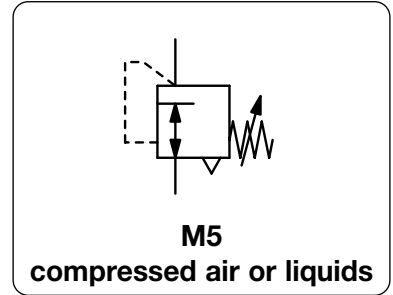


MICRO PRESSURE REGULATOR

RR-M5



Description	Highly compact piston-operated regulator, suitable for panel mounting and basic pressure regulation.
Media	compressed air, non-corrosive gases or liquids
Supply pressure	max. 6 bar at 0.2 ... 2 bar pressure range, max. 10 bar at 1 ... 8 bar pressure range
Adjustment	by knurled-head screw with locknut
Relieving function	relieving for air, non-relieving for water
Gauge port	not available
Mounting position	any
Temperature range	0 °C to 60 °C / 32 °F to 140 °F, for appropriately conditioned compressed air down to -30 °C / -22 °F
Material	Body: nickel-plated brass Elastomer: NBR/Buna-N Inner valve: stainless steel and brass



Dimensions			Flow rate	Supply pressure	Connection thread	Pressure range	Order number
A	B	A/F	l/min*1	max. bar	M5	bar	
mm	mm	mm					

Pressure regulator for air				supply pressure max. 6 / 10 bar, relieving	RR-M5
19	40	17	70	6	RR-M5A
17	40	17	70	10	RR-M5C

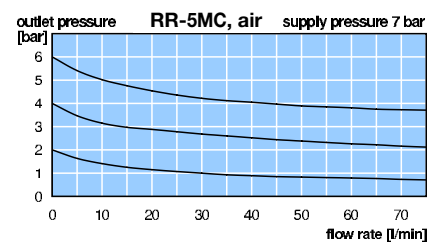
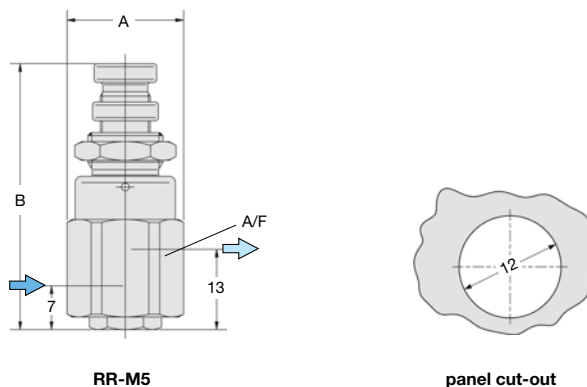
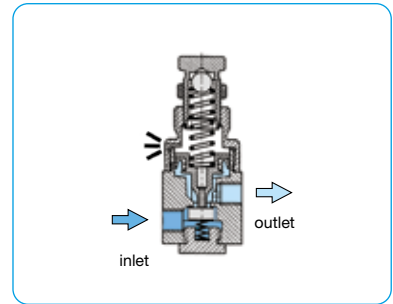


Pressure regulator for water				supply pressure max. 6 / 10 bar, non-relieving	RR-M5
19	40	17	1.2	6	RR-M5AK
17	40	17	1.2	10	RR-M5CK



Special options, add the appropriate letter
 for oxygen specially cleaned, with oxygen grease minimum purchase 50 pieces RR-M5 . . K15

Accessories, enclosed
 plastic panel nut M12x1K



*1 for compressed air: 7 bar supply pressure and 6 bar outlet pressure and 2 bar pressure drop
 for water: supply pressure 2 bar above outlet pressure

* Product group

PDF CAD
 www.aircom.net

Order example:
 RR-M5A